



Loading and Unloading Systems

Loading and Unloading Systems

LOADING AND UNLOADING WAGON

This machine (AAW) uses well established technology to load or unload long rails without the risk of damaging them. The rails are pulled off the transportation unit and deposited in the track with the use of guided rolls.

- Loading and unloading
- Suitable for rails up to 180 m
- Working speed: up to 1000 m of track per hour
- Deposit on/pick-up from sleeperhead and inner part of the sleeper
- Ideal use of possession time thanks to short set-up and dismantling times
- Self-sufficient power supply and illumination
- Deutsche Bahn approved



RAIL LOADING TRAIN

The Rail Loading Train (SLW) is an efficient and fast system for loading and unloading rails in combination with "Robel" type transport units. A crane moves on crane rails running the length of the transport units, either picking up rails from the units and laying them in the track, or pulling rails up from the track and depositing them on the units.

- Loading and unloading
- Suitable for rails up to 180 m
- Working speed: up to 1400 m of track per hour
- Deposit/pick-up on/from sleeperhead and inner part of the sleeper
- High efficiency even on nonadjacent pick-up or deposit sites
- Deutsche Bahn approved





Rail Unloading System (SAS)

RAIL UNLOADING SYSTEM

The Rail Unloading System (SAS) is transported by truck via road and therefore offers a very economical and flexible option for unloading rails. The set-up and dismantling of the system is fast and easy to handle.

- Suitable for rails up to 180 m
- Working speed: up to 720 m of track per hour
- Deposit on sleeperhead and inner part of the sleeper
- Suitable for most types of rail transportation units
- Deutsche Bahn approved

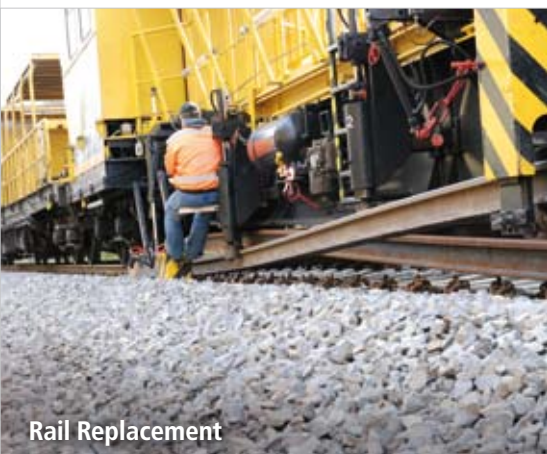


Rail Lifting Unit (SHG)

RAIL LIFTING UNIT

The self-developed Rail Lifting Unit (SHG) is especially suitable for shorter rails. It is mounted directly on the rail transportation unit and doesn't need any further equipment to function.

- Loading and unloading
- Suitable for rails from 12 m to 60 m
- Working speed: up to 500 m of track per hour
- Deposit/pick-up on/from sleeperhead
- Deutsche Bahn approved



Rail Replacement

RAIL REPLACEMENT

The Vossloh Rail Services Rail Replacement System is composed of several different modules and single-handedly produces ready-to-install continuously welded rail. It is especially suited to larger rail replacement projects (> 2500 m of track). The fast working speed and the saving of separate unloading and loading shifts make significant cost reductions possible.

- Integration of rail unloading, replacement and loading of used rails
- Suitable for rails up to 180 m
- Working speed: up to 800 m of track per hour
- Combination with mobile flash-butt welding possible
- Smallest working radius: 350 m; max. cant: 180 mm
- Deutsche Bahn approved



Vossloh Rail Services offers comprehensive rail services. Our portfolio covers the complete rail life cycle, starting from the production and transportation of long welded rails, to preventative maintenance and all the way to the reconditioning of used rails. We have a team of highly specialized employees that applies unique technologies and processes in order to maintain the value and the reliability of modern railways for our customers.